

FRACTURE™

FUNGICIDE

ATTACK FUNGAL DISEASE WITH AN ENTIRELY NEW MODE OF ACTION

COMPLETELY NOVEL MODE OF ACTION

Fracture™ biofungicide introduces a completely new mode of action to disease management, providing decisive, multi-site control in a way that no other fungicide can claim. It is so new, in fact, that the active ingredient, called BLAD, has its own unique FRAC group code M12. The M group is made up of fungicides with multi site activity, which slows the development of resistance. Plus, the fact that Fracture's mode of action is unique makes Fracture an excellent rotation partner for your most reliable and vulnerable disease control products.

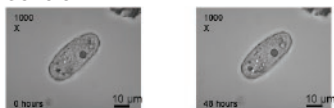
Fracture works on contact by deforming and inhibiting fungal cell production, ultimately tearing apart the cell wall and enveloping the fungal cell membrane. These actions then start a chain of events that disrupt nutrient absorption, end cellular reproduction and destroy the fungal cell. All this occurs within eight hours of contact. The result is quick, reliable disease control that meets or exceeds established standards.

Bottom line, Fracture is best used in rotation with your current conventional spray program. Fracture is driven by a novel, multiple-site mode of action that delivers excellent disease control in the field; and, in rotation, keeps your best performing fungicide options working at their peak.

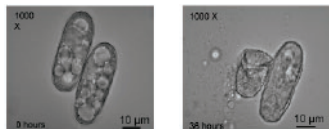
BLAD – THE ACTIVE INGREDIENT

Mode of Action

Control



BLAD



BLAD (200pg/mL) effect on *Eryshiphe necator* (casual agent powdery mildew) spore germination

LABELED CROPS

- Grape
- Strawberry
- Tomato
- Apricot
- Cherry
- Nectarine
- Peach
- Plum
- Prune
- Outdoor Ornamentals

LABELED DISEASES

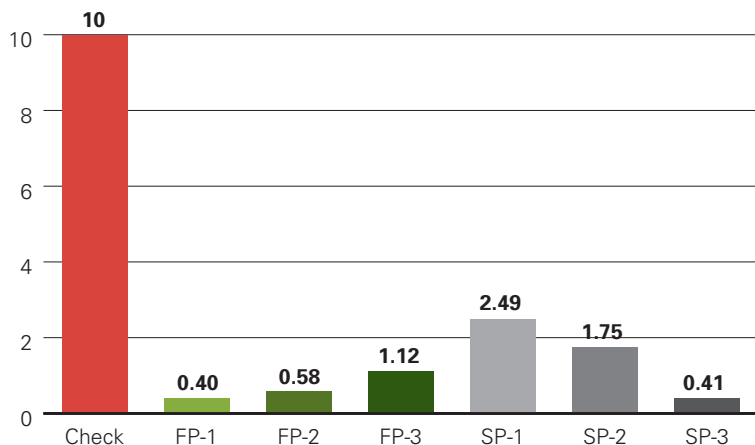
- Powdery Mildew
- Botrytis Gray Mould
- Blossom Blight



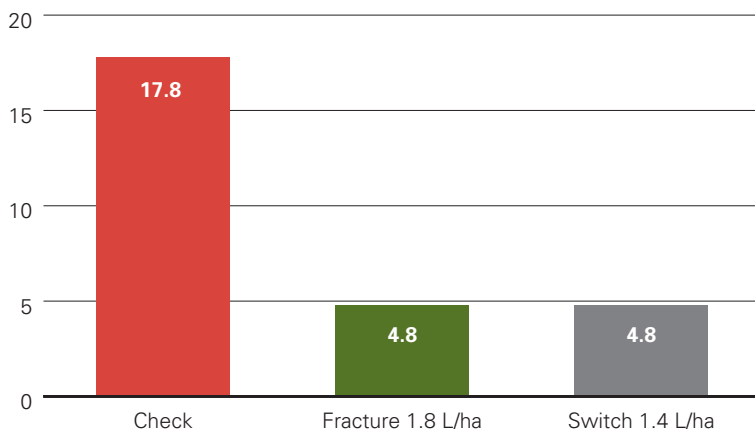
> QUICK FACTS

- Is a biofungicide
- New multiple-site mode of action controls fungal disease in a way no other product can claim
- Excellent resistance management tool
- 0 day PHI; no re-entry interval
- Apply up to five times per season
- Adjuvant not required
- Extremely low toxicity to humans, animals and the environment
- No adverse effects on pollinators or beneficial insects

**Powdery Mildew: % severity on bunches (veraison)
Cardonary Grapes – Courtland, CA**



**Botrytis: % Incidence of Harvested Strawberries – Hillsboro, OR
4 applications at 7 day spray intervals**



APPLICATION GUIDELINES

- Pre-Harvest Interval: 0 day
- Maximum Amount of Fracture™ per Season: No more than five foliar applications per crop season or more than two sequential applications

LABEL

- Rates: 1.5 - 3.3 L/ha
- Active Ingredient: BLAD polypeptide
- Mode of Action: Inhibition of cell wall synthesis and nutrient uptake
- Product shelf life: No expiry date

FP= Fracture program

SP = Standard program

- FP-1: Kumulus, 1.2 kg/200 L (at budbreak) then FRACTURE, 2.2 L/ha + Silwet L-77, 0.125% (v/v) 14 d alt Abound, 1.2 L/ha + Silwet L-77, 0.125% (v/v), 14-21 d (RI)
- FP-2: FRACTURE, 2.2 L/ha + Silwet L-77, 0.125% (v/v) (2x) then Sonata, 3.8 L/ha + Silwet L-77 (10 d)
- FP-3: Kumulus (at budbreak), 1.2 kg/200 L, then FRACTURE, 1.6 L/ha + Abound, 0.8 L/ha, 14 d +
- SP-1: Sonata, 3.8 L/ha + Silwet L-77, 0.125% (v/v), 7-10 d (RI)
- SP-2: Abound, 1.2 L/ha + Silwet L-77, 0.125% (v/v), 14-21 d (RI)
- SP-3: Quadris Top, 3.8 L/ha + Dyne-Amic, 0.125% (v/v) alt Quintec, 0.3 L/ha + Dyneamic, + 0.125% (v/v), 14 d

“Powdery mildew control has proven to be one of the most persistent challenges within our strawberry production system. Fracture, when used in rotation with other mildew products, has helped us keep on top of the problem, plus the unique mode of action slows the development of resistance.”

*Jeff Tigchelaar
Tigchelaar Berry Farms*

For complete information on Fracture™ and all FMC products please contact your local FMC sales representative or visit FMCcrop.ca. Distributed by UAP in Ontario/Maritimes (1-800-265-5444), Quebec (1-800-361-9369) and British Columbia (1-604-864-2866) or visit UAP.ca. Always read and follow label directions. FMC and Fracture are trademarks of FMC Corporation. Switch, Abound and Quadris Top are trademarks of Syngenta Crop Protection, Inc. Sonata is a registered trademark of Bayer. KUMULUS and PRISTINE are registered trademarks of BASF SE. Silwet L-77 is a trademark of Momentum Performance Materials Inc. Dyne-Amic is a trademark of Helena Holding Company. Quintec is a registered trademark of Dow AgroSciences LLC. © 2017 FMC Corporation. All rights reserved. 17FMC006

