



Boost your burnoff. Keep your cropping options open.

What is Aim® EC herbicide?

Aim® EC herbicide is a powerful, flexible pre-seed Group 14 herbicide. Applied with glyphosate and other tank-mix partners, it controls many troublesome weeds. Aim® EC herbicide allows you to seed a wide variety of crops after application, including canola, pulses (including lentils) and cereals.

How does Aim® EC herbicide help my farm business?

Controls a wide range of troublesome weeds (see next page for complete list)

- Excellent performance for your pre-seed weed control program
- Quicker burnoff of hard-to-control weeds such as kochia and volunteer canola
- Adds a novel mode of action to glyphosate for resistance management

Keeps cropping options open

- Seed immediately after application, including canola and lentils
- See tank-mixes below for details on crops that can be seeded post-application

Strong herbicide resistance management tool

- Controls many glyphosate-resistant biotypes
- Since glyphosate is a Group 9, using a Group 14 herbicide in pre-seed burnoff gives you a strong management tool against herbicide resistance

GROUP
14

Quick facts:

Formulation:

EC – emulsifiable concentrate

Water volume:

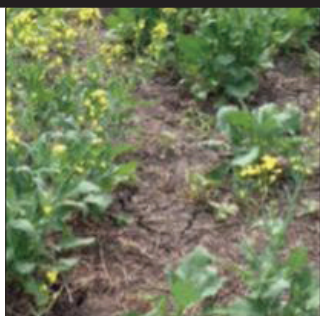
10 gal/ac (100 L/ha)

Rainfastness: 1 hour

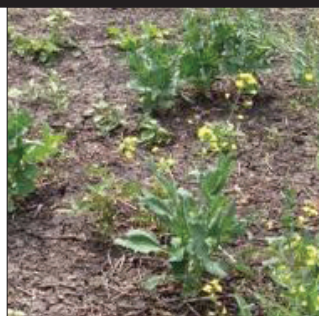
Timing:

- Pre-Seed Burnoff
- Chemfallow
- Harvest Aid
- Post Harvest

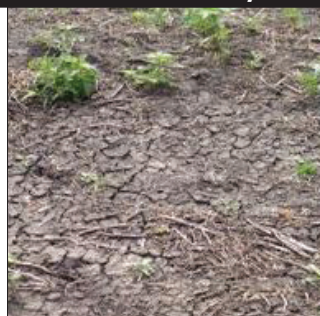
140 gai/ha bromoxynil
½ rate



280 gai/ha bromoxynil
Full rate



Aim® EC @ 15 mL/ac
+ ½ rate bromoxynil



*all tank mixed with .5 L/ac of glyphosate

Which tank-mix should I use?

Express® brand herbicides + Aim® EC herbicide + glyphosate if you plan on planting cereals or soybeans.

2,4-D + Aim® EC herbicide + glyphosate, if you are planning on planting cereals or soybeans.

MCPA + Aim® EC herbicide + glyphosate, for going after tough weeds like wild buckwheat and stinkweed. Using MCPA allows you to plant flax or peas after application.

Bromoxynil + Aim® EC herbicide + glyphosate, for faster, more complete weed control and a wide range of post-application cropping options - great mix prior to planting canola.

Kochia and lamb's-quarters control 7 days after application.



glyphosate alone



Aim® EC herbicide + glyphosate

What rate should I use?

Field Weed Conditions	Product Rate	1.2 L jug (ac/jug)	2.0 L jug (ac/jug)	4.8 L jug (ac/jug)
Standard burnoff • Or tank-mixed with other burnoff additives	15 mL/ac	80	133	320
When weed spectrum includes moderate pressure or larger weeds	24 mL/ac	50	83	200
Glyphosate resistant weeds (kochia, volunteer canola) Large overwintering cleavers Heavy weed pressure or large weeds	30 mL/ac	40	67	160

Crops:

- Canola
- Lentils
- Cereals
- Peas
- Flax
- Soybean
- Faba bean
- Many More

Recropping:

Any crop may be seeded the following spring after an application of Aim® EC herbicide.

Aim® EC herbicide can also be used in fallow systems, as a harvest aid treatment and in a hooded sprayer application.

Weeds:

- Cleavers (Group 2 & 4 resistant)
- Cocklebur
- Common purslane
- Corn spurry
- Dandelion (spring germinating)
- Eastern black nightshade
- Flixweed
- Hairy nightshade
- Horsetail
- Kochia (Group 2, 4 & 9 resistant)
- Lamb's-quarters
- Morning glory
- Pigweed (prostrate, redroot, smooth, tumble)
- Prickly lettuce
- Round-leaved mallow
- Russian thistle
- Shepherd's-purse
- Smartweed, Pennsylvania (seedling)
- Stinkweed
- Tansy mustard
- Velvetleaf
- Volunteer canola, including glyphosate tolerant
- Waterhemp (common, tall)

Questions? Ask your retailer about Aim® EC herbicide today.

Always read and follow label instructions.
Member of CropLife Canada.

FMC and Aim are trademarks or service marks of FMC Corporation and/or an affiliate.
©2019 FMC Corporation. All rights reserved. 63183-12/18

  @FMCAgCanada

FMCcrop.ca | 1-833-362-7722